

# Picture This: Linking Photos and GPS





# Choose your GPS

- ◆ Professional-Grade

- ◆ 8in – 5m accuracy



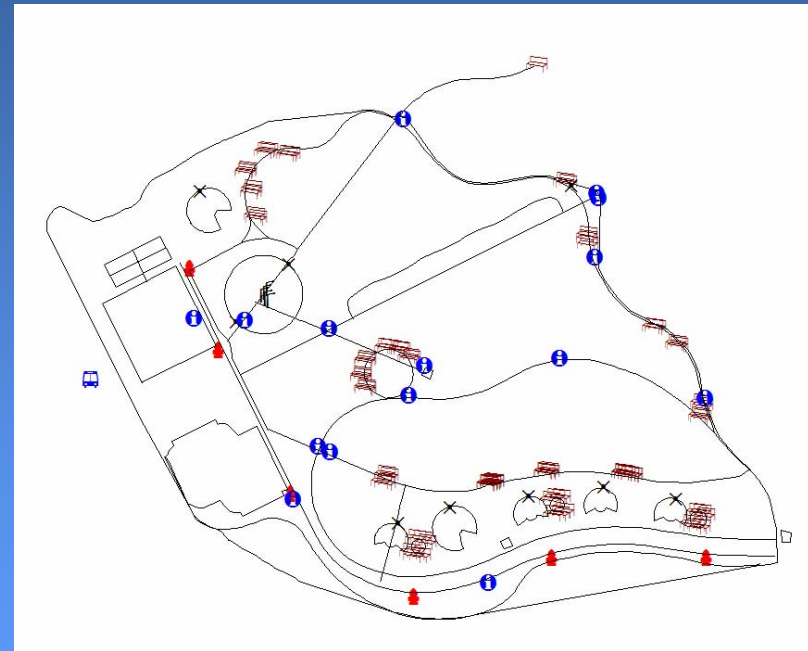
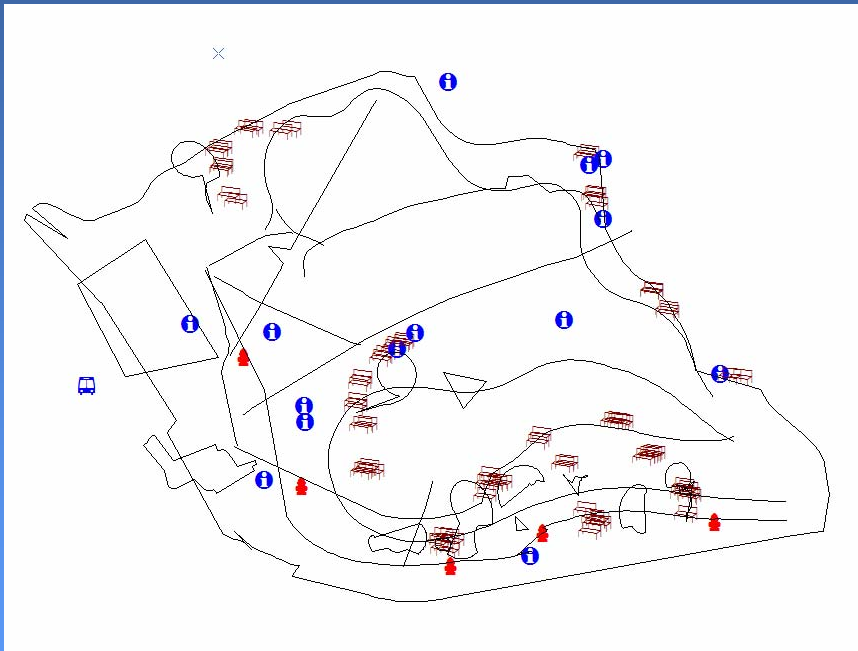
- ◆ Consumer Grade

- ◆ 5m – 10m accuracy



# GPS Accuracy

◆ Is GPS Accuracy important to you?



# Choose your camera

---

- ◆ **Professional Grade**

- ◆ Ability to create automatic links to your data



- ◆ **Consumer Grade**

- ◆ Must manually create links to your data



# Camera Resolution

---

## ◆ High-Resolution:



# Camera Resolution

---

- ◆ Lo-Resolution (cell-phone camera):



# Pro Camera / Consumer GPS





# Pro Camera / Pro GPS



# Wireless Integration

- ◆ Bluetooth
- ◆ Wi-Fi



# Professional Image Integration

---

- ◆ Camera

- ◆ Ricoh Caplio Pro G3

- ◆ 3.2 megapixels, 3x zoom, Wi-Fi capable



# Professional Image Integration

---

- ◆ GPS
  - ◆ Trimble GeoXM/XT/XH (Integrated handheld)



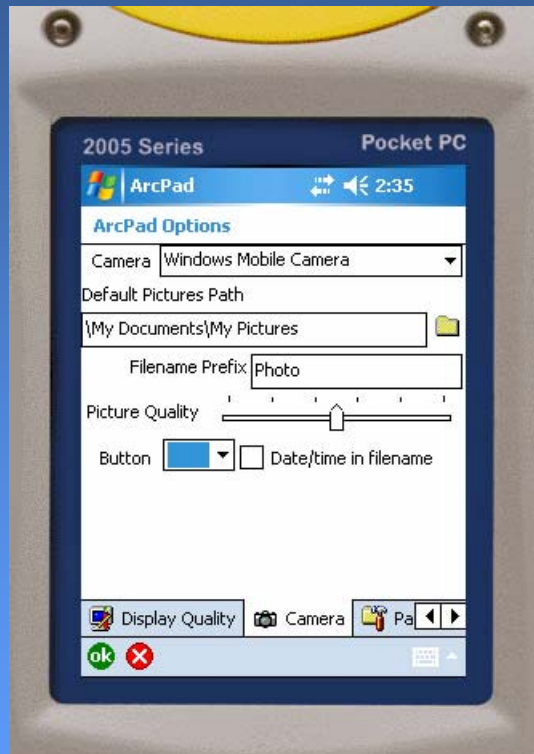
# FTP software

- ◆ VXTFP Surv by Cambridge Computer Corp.



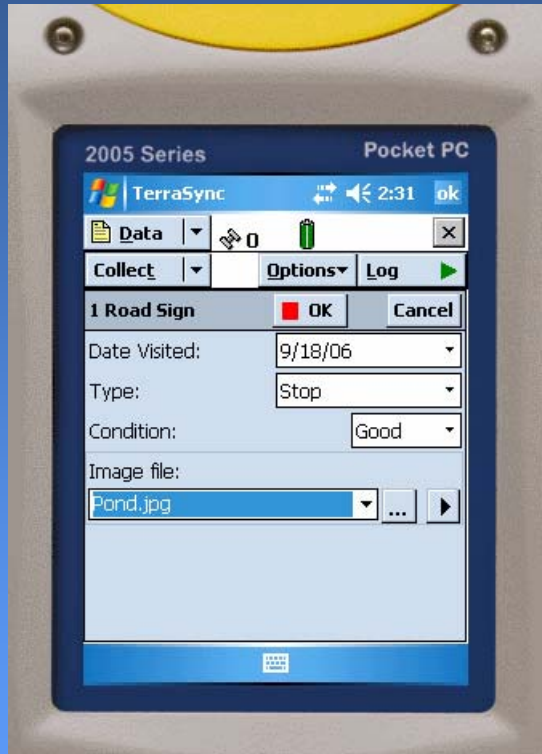
# Field Software

## ◆ ArcPad by ESRI



# Field Software

## ◆ Terrasync by Trimble



---

**Questions?**

**Field Demo**

