



Potential Butler Garter Snake Habitats in The City of New Berlin

Matt Schreiber

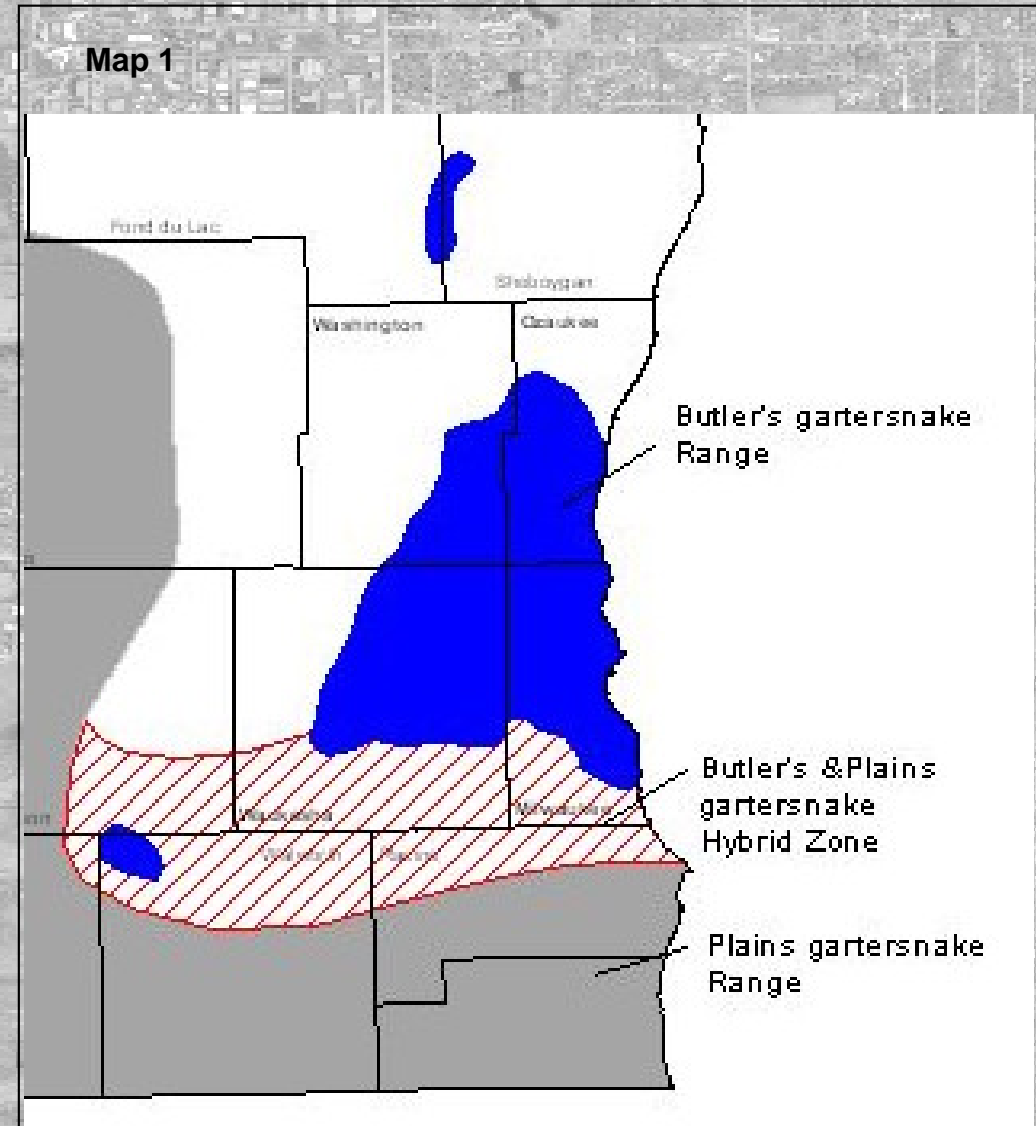
City of New Berlin

Overview

- Information regarding Butler Garter Snakes.
- Affects on local projects.
- Find potential locations for Butler Garter Snakes.

Location of Species

- Located in South East Wisconsin.
 - This area includes Milwaukee, Waukesha, Washington, Ozaukee Counties.



Threatened Species

- **Wisconsin Threatened Species:** Any species which appears likely, within the foreseeable future, on the basis of scientific evidence to become endangered.
- ▶ The two primary reasons for its listing are the loss and fragmentation of suitable habitat, and genetic swamping caused by hybridization with the eastern plains garter snake along the southern boundary where the ranges overlap.

Tier 3 Sites

- The goal of the study was to find tier 3 sites in New Berlin.
- Tier 3 sites potentially support large Butler's garter snakes populations and are critical to the long-term conservation of this animal. The loss of a population at a significant site could jeopardize the status of the species based on the current data available.

Affects on the City Center

- New Snake Management area causes City Center Project to protect lands for Snake Management.

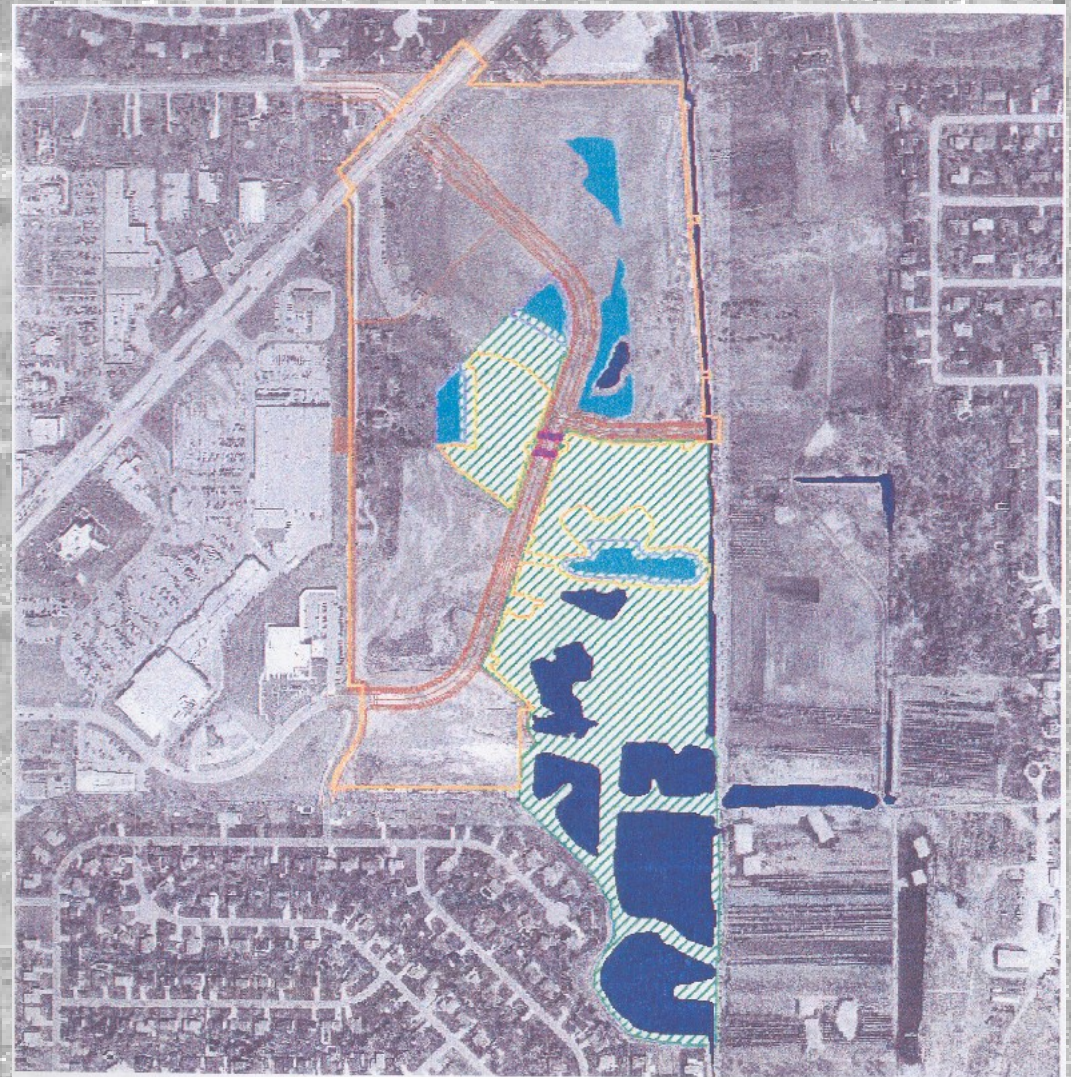
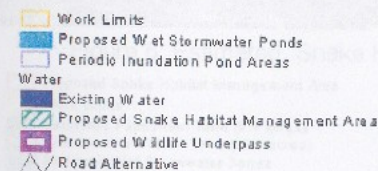


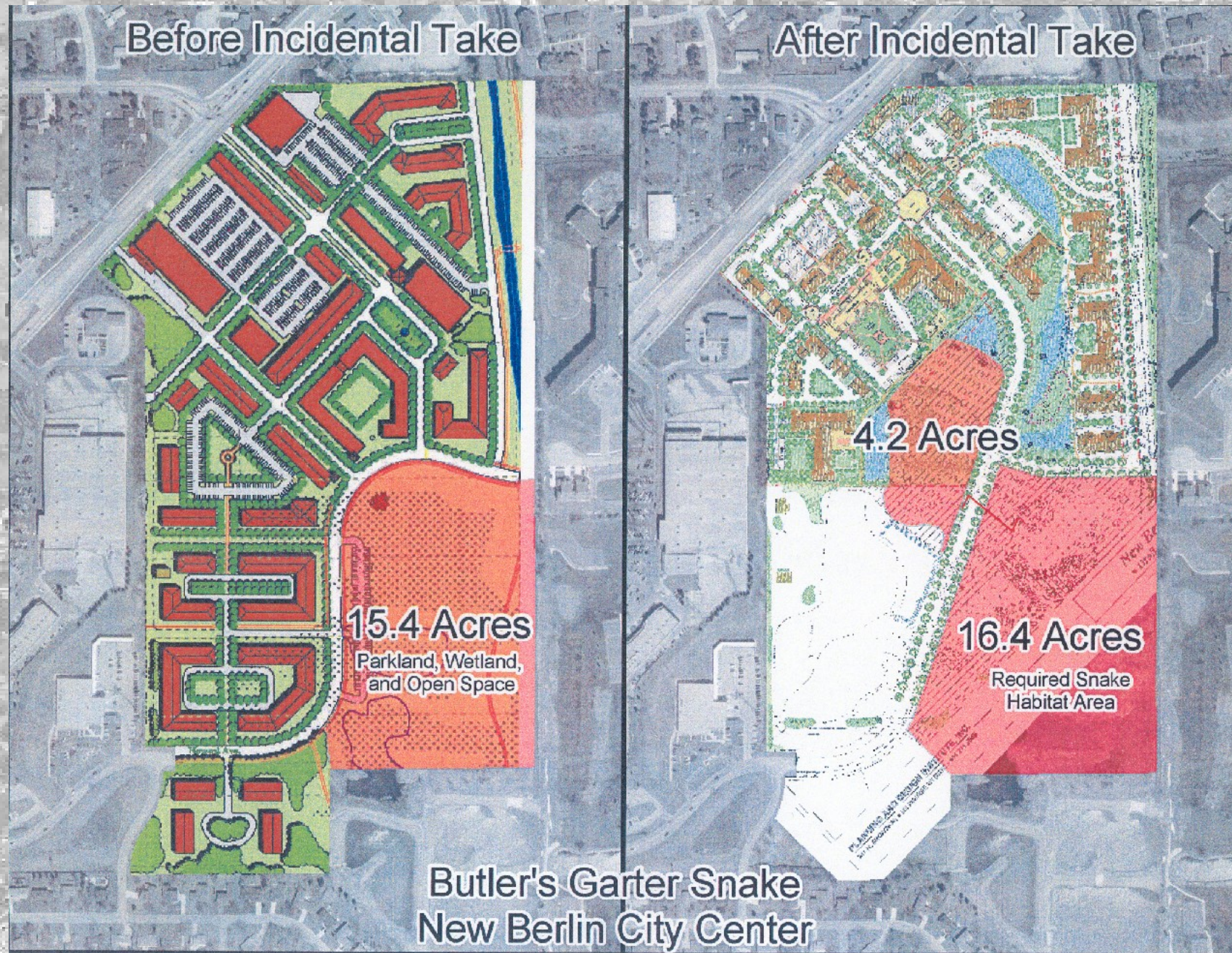
Figure 5: Proposed Snake Habitat Management Areas. New Berlin City Center.



200 0 200 Feet

Casper Consulting, P.O. Box 375, Singer, WI 53096-0375.
Batters Gate Snake Conservation Plan, New Berlin City Center, Dec 10, 2002.

Before and After

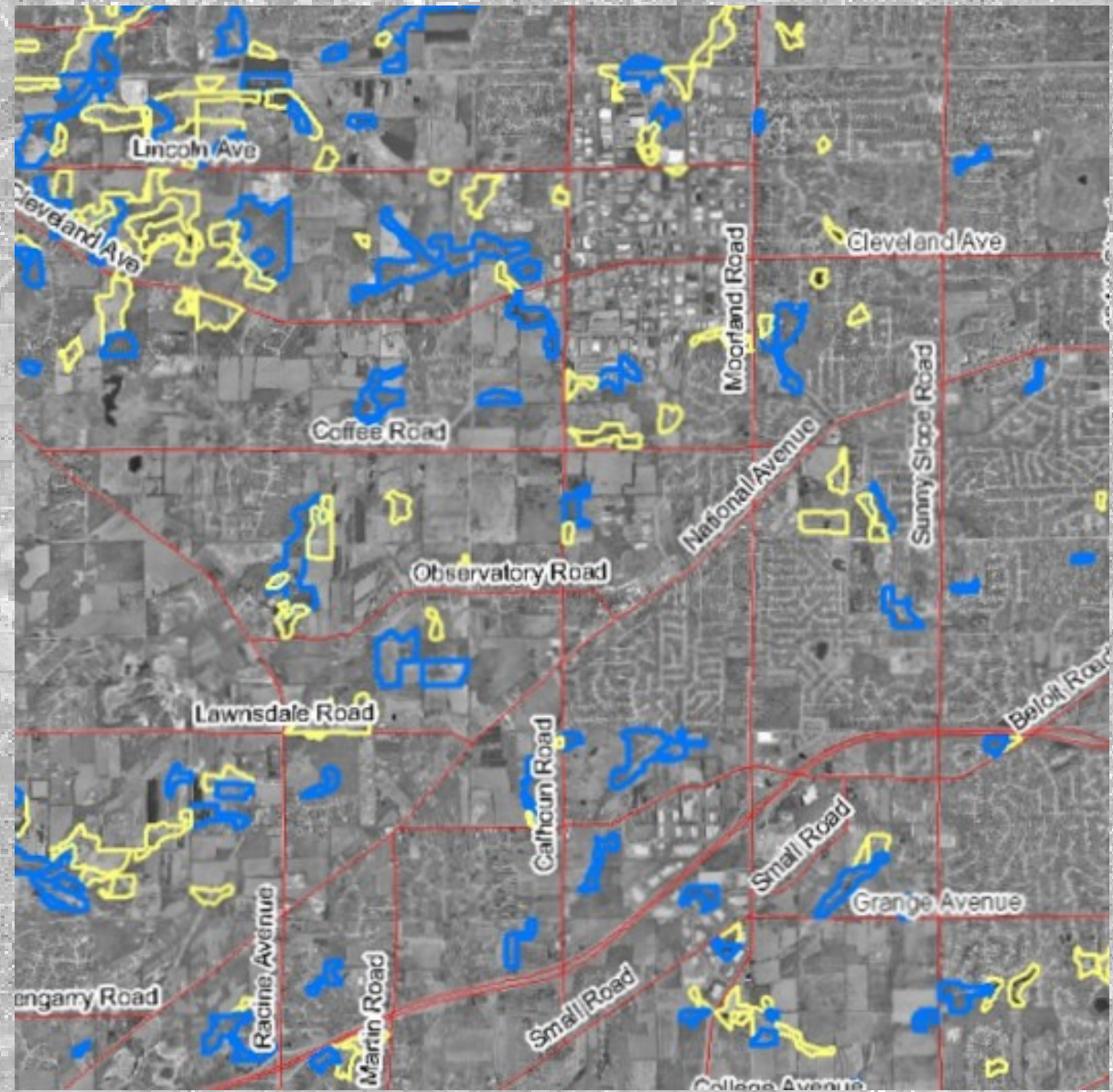


Process: Step 1

Turn on wetlands
from the layers
and show only the
emergent wetlands
and the scrub
wetlands.

Yellow = Emergent

Blue = Scrub



Step 2



Zoom in on areas where these show up and look at the entire suitable habitat patch (the contiguous block or corridor of habitat that falls close enough to be considered non-Isolated.)

Step 3

Turn off the wetlands so we can see the habitat better and we draw a polygon around the habitat patch that includes a 300-foot margin of open or partially open canopy upland habitat surrounding the suitable wetlands that is not in active agriculture or otherwise obviously disturbed to make it unsuitable for Butler's.

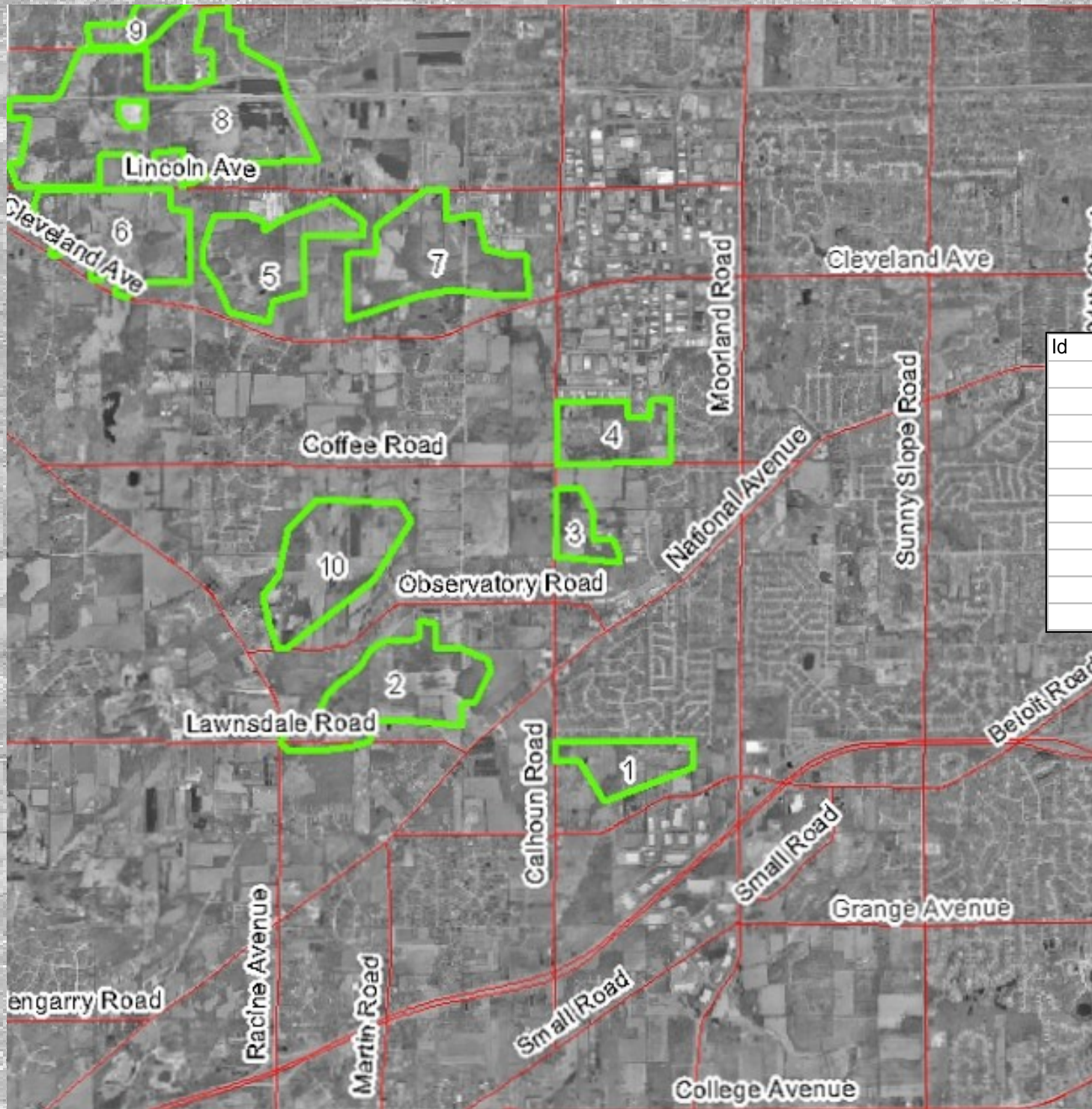


Step 4

- Repeat Steps 1-3 examining all areas with emergent and scrub wetlands that could be suitable for Butler Garter Snakes.

Approved By the DNR

- Send Data to the DNR to examine for final approval.
- The study identified three areas that were previously not identified as well as seven areas already identified by the DNR.



Id	Area (Sq FT)	Acres	Type
1	4,449,933.35	102	Tier 3 Site
2	10,653,812.93	245	Tier 3 Site
3	2,426,110.77	56	Tier 3 Site
4	5,525,078.15	127	Tier 3 Site
5	8,303,803.29	191	Tier 3 Site
6	9,873,530.23	227	Tier 3 Site
7	10,691,918.65	245	Tier 3 Site
8	23,871,897.95	548	Tier 3 Site
9	2,046,714.88	47	Tier 3 Site
10	10,222,937.68	235	Tier 3 Site

Results

- Identified 10 areas that are roughly 2,023 acres in size that potentially have Butler Snakes.
- The location of the snakes is primarily on the west side of the City that is largely rural.

Why this is important?

- Get the DNR involved before early in the development process.
- Provide developers with information regarding obstacles to development with regards to snake habitats.
- Protect Habitats of the Butler Garter Snakes in New Berlin.

Voluntary Actions to Protect Habitats

- Time projects so that they occur during the snakes inactive period (Nov. 6- Mar. 15).
- Redesign project to maximize remaining suitable habitat patch size.
- Support research that increases our knowledge of snake habitat requirements and management
- Land Trusts or other conservation organizations obtain conservation easements to protect additional habitat.
- Establish voluntary protection agreements with private landowners.
- Establish upland habitats to further protect and/or maintain Butler's habitat.
- Fee Title acquisition by DNR or other conservation organizations.